

2023-24
39TH SEASON

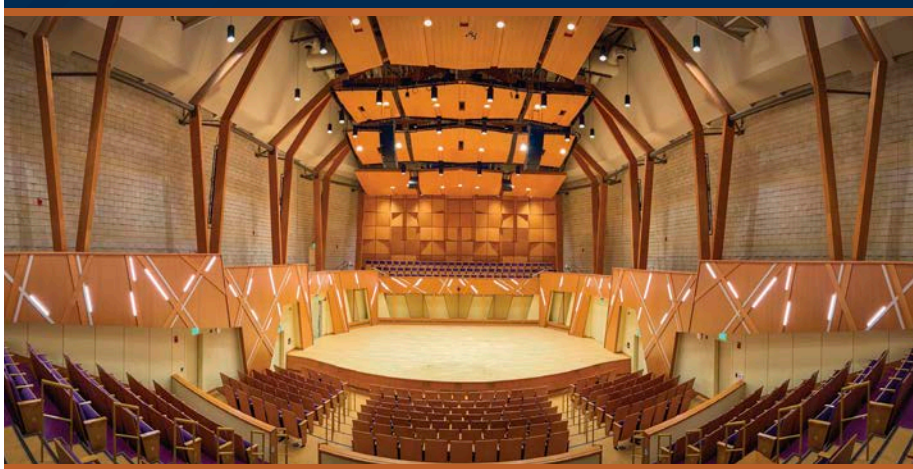


**CONWAY
SYMPHONY
ORCHESTRA**
Israel Getzov, Music Director

PRESENTS

THE CSO'S
WINDGATE DEBUT CONCERT

Presented by Rock Pond Pros



FEATURING BRENT FATHERLY, CLARINET

SUNDAY, OCTOBER 29, 2023, 4 PM

WINDGATE CENTER FOR FINE AND PERFORMING ARTS

CONCERT HALL, UCA CAMPUS

UNDERWRITTEN BY



UNIVERSITY OF
CENTRAL
ARKANSAS™

TITLE SPONSOR



**ROCK
POND
PROS**

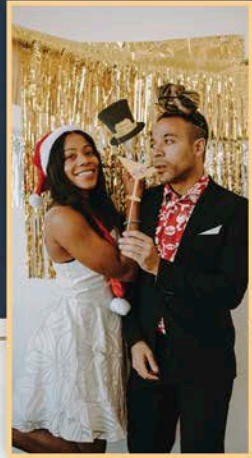


THE MAX
EVENT VENUE

DEBUT CONCERT TITLE SPONSOR

Celebrate the Holidays at
THE MAX

WE ARE A FULL-SERVICE VENUE POWERED BY CREATIVITY.



We deliver exceptional corporate
and personal gatherings!

Book Your Tour Today!

Experience
THE MAX



themax@rockpondpros.com · 501.402.0053

ExperienceTheMax.com





C O N W A Y
S Y M P H O N Y
O R C H E S T R A

Israel Getzov, Music Director

On behalf of the Conway Symphony Orchestra Board of Directors, I am pleased to welcome each of you to our very first Conway Symphony Orchestra concert in this, our fantastic new home!

I know that you will enjoy this evening's performance in this beautiful room with its remarkable acoustics, allowing you to experience the CSO as never before! We hope you will return again and again to be uplifted by the beauty and expressivity of this music in this special place.

Welcome to the future of the
Conway Symphony Orchestra.

Welcome to Windgate!

Judy Harkrider

Judy Harkrider,

President,

Conway Symphony Orchestra
Board of Directors



Judy Harkrider, President



Please take this survey to help us with our grant funding.

The CSO is proud to partner
with the



UNIVERSITY OF
CENTRAL
ARKANSAS™

COLLEGE OF ARTS,
HUMANITIES, AND
SOCIAL SCIENCES

to shape the arts in Arkansas.



CONWAY
SYMPHONY
ORCHESTRA

Israel Getzov, Music Director

2023-2024
39th
SEASON

Sunday, October 29th, 2023, 4:00 pm

Windgate Center for Fine and Performing Arts Concert Hall, Conway, Arkansas

THE CSO'S WINDGATE DEBUT CONCERT

Conway Symphony Orchestra

Israel Getzov, Conductor

Brent Fatherly, Clarinet

Chris Fritzges, Actor

Scott Meador, Digital Media Coordinator

Clair de Lune (arr. André Caplet)

Claude Debussy
(1862-1918)

Capriccio Espagnol, Op. 34

- 1) *Alborada*
- 2) *Variations*
- 3) *Alborada*
- 4) *Scene and Roma Song*
- 3) *Asturian Fandango*

Nikolai Rimsky-Korsakov
(1844-1908)

Clarinet Concerto No. 2 – First Section

Brent Fatherly, Clarinet

Oscar Navarro
(b. 1981)

Conga del Fuego Nuevo

Arturo Márquez
(b. 1950)

—INTERMISSION—

Peer Gynt Suite No. 1, Op. 46

- 1) *Morning Mood*
- 2) *Death of Åse*
- 3) *Anitra's Dance*
- 4) *In the Hall of the Mountain King*

Chris Fritzges, Actor

Digital Media from the students of Prof. Meador

Edvard Grieg
(1843-1907)

Finlandia, Op. 26

Jean Sibelius
(1865-1957)

MAESTRO PATRON



COLLEGE
SQUARE

Exceptional Retirement Living

Proud to support the
Conway Symphony Orchestra

Independent Living for Anyone 55+ including:

- Choice of four spacious floor plans
- All utilities included (except phone)
- Three delicious meals served daily
 - Scheduled transportation
 - Special UCA privileges
 - Weekly housekeeping
 - Beauty/barber shop
 - Planned activities

And So Much MORE!

501-327-6227

2421 College Ave, Conway, AR • 72034

 /collegesquare

Proud Sponsor & Board Member

The

EMILY

WALTER *Team*

501.269.8688



**RE/MAX
ELITE**



selling-arkansas.com



MAESTRO PATRON



Israel Getzov, Music Director

American conductor Israel Getzov begins his nineteenth season as Music Director of the Conway Symphony Orchestra. He also serves as Music Director of the Little Rock Winds, and Artistic Advisor to the Orquesta Filarmónica de Santa Cruz de la Sierra. He previously held the positions of Associate Conductor of the Arkansas Symphony and Principal Conductor of the Tianjin Philharmonic, the resident orchestra of the Tianjin Grand Theater.

Mr. Getzov has conducted orchestras throughout the United States and abroad, including Abilene Philharmonic, Asheville, Symphony, Cleveland Pops, Monroe Symphony, Skokie Valley Symphony, Mid-Texas Symphony, Shanghai Philharmonic, Symphony of the Mountains, Tianjin Symphony, Zhejiang Symphony Orchestra, Bolivia Classica, University of Taipei Symphony, and the Encuentro Jovenes Musicos Festival in La Paz. As an opera conductor, he led the world premiere of *The Scarlett Letter* by American composer Lori Laitman, conducted works of Giancarlo Menotti at the Shanghai Oriental Arts Center and the Cleveland Institute of Music, and worked as Staff Conductor for Tianjin Grand Opera in productions of *La Traviata*, *Il Trovatore*, *Rigoletto*, *Bluebeard's Castle*, and *Oedipus Rex*.

Mr. Getzov was selected by Leonard Slatkin to conduct the National Symphony Orchestra at the Kennedy Center in Washington, D.C. and was chosen by David Zinman for the American Academy of Conducting at the Aspen Music Festival.

Mr. Getzov started the violin at age 3, and later studied viola, piano and percussion. He has performed as an orchestral violinist with many renowned conductors including Barenboim, Boulez, Solti, Mehta and Rostropovich. He was a founding member of the Rockefeller String Quartet, a professional quartet with whom he gave over 200 concerts. Mr. Getzov holds a tenured professorship at the University of Central Arkansas and has given clinics at many conservatories and music schools in the U.S., Asia, and South America. An experienced public speaker, he hosted his own weekly radio program on Arkansas KLRE 90.5FM called "Izzy Investigates" and has performed live as a chamber musician on WFMT and WBEZ in Chicago.



WE GIVE EDUCATION 100%. *Just like you.*

Bright futures are always a smart investment. So we go all in for Conway. From preschool to grad school, Conway Corp supports area students, teachers, schools and scholarships. We provide services. Fund buildings. Change lives. Conway Corp is committed to powering education for all of our kids – and we love seeing those investments pay off.



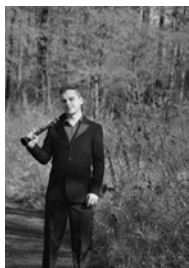
ALWAYS ON.



| (501) 450-6000

| ConwayCorp.com





Brent Fatherly Clarinet

Brent Fatherly is both an accomplished clarinetist and composer. He completed dual undergraduate degrees in Music Education and Music Composition followed by a Graduate Certificate in Clarinet Performance at the University of Central Arkansas. Currently, he is pursuing a master's in music composition at Southern Methodist University. He has composed a variety of works for both large and small ensembles, as well as solo pieces. His works have been performed by several chamber ensembles as well as the University of Central Arkansas Wind Ensemble.



Chris Fritzges

Originally from Pittsburgh, Pennsylvania, Chris has been a full-time educator at the University of Central Arkansas in Conway since 2002, where he teaches acting, voice and movement, and directs as an associate professor. He is a member of Actor's Equity Association and is an advanced actor combatant within the SAFD. Trained as an actor, Chris has been performing for audiences for over thirty years. Over the last several years, he has performed regularly with the Arkansas Shakespeare Theatre and has been active in many other film, television, and radio projects in the region.



Scott Meador, professor of Art & Design

Scott Meador is a professor of Art and Design at UCA with a background in computer graphics, theatrical design, and fine art. He teaches multiple forms of animation and interactive media and fine art foundations. Professionally, Scott contributes to live events-oriented projects including 3D animation and motion graphics for recording artists' concert tours, projection mapping events, and concert set design and visualization.

Visuals for Peer Gynt by students under Professor Meador's supervision

Morning Mood: Isaiah Merriwether, Nic Miles

Aase's Death: Jaxton Johnson, Yudai Sakurai

Anitra's Dance: Len Adair, Bruce White

In the Hall of the Mountain/Troll King: Avery Moore, Scott Meador

Finding your dream
home is my *forté!*



Courtney Corwin
REALTOR®
501-647-4878



courtney@charlottejohn.com

The Charlotte John Company
1300 Oak Street • Conway, AR 72034
www.charlottejohn.com
501-664-5646



Netherton
PROMOTIONS, INC.

Getting You To The Top

Kirk & Laurie Netherton

**Proudly Supports
the Arts!**

HERE FOR ALL YOUR
MUSICAL NEEDS.

LESSONS
REPAIR
RETAIL

PALMER
— MUSIC CO —

WE MAKE MUSICIANS.

•
1131 FRONT ST.
CONWAY, AR
501-327-8129
PALMERMUSIC.CO

•
LESSONS, REPAIR, RETAIL

**SCAN
HERE**

TO SIGN UP
FOR YOUR FREE
TRIAL LESSON



PALMER MUSIC CO HAS LONG BEEN THE HUB FOR
ALL THINGS MUSIC IN CENTRAL ARKANSAS.

WE'D LOVE TO HELP YOU ACHIEVE YOUR
MUSICAL GOALS!



THE ORCHESTRA

Israel Getzov, Music Director/Conductor

Suzanne Loerch, General Manager

Anna Bass-Mattingly, Orchestra Personnel Coordinator

George Fu, Assistant Conductor & Library/Operations Manager

Mateo Peláez, Library/Operations Manager

VIOLINS

Linda Hsu*

Concertmaster

Levanna Xu+

Abraham Martinez+

Albert Garcia Delgado+

Associate Concertmasters

Charlotte Crosmer*

Principal 2nd Violin

Linnaea Brophy

George Fu

Beth Gould

Ava Godfrey

Felix Guzmán

Yulin Huang

Matthew Humphrey

Karen Jarboe

Lisa Kennedy

Brandon King

Laura Gu

Siara López

Sandy McDonald

Tom McDonald

Geronimo Oyenard

Camila Pacheco

Lisa Pavilionis

Oksana Pavilionis

Ida Pearson

Magdalena Ryszkowski

Algis Staskevicius

Qinqing Yang

VIOLAS

Kater Reynolds*

Elizabeth Calixto+

Anna Bass-Mattingly

Paulina Casas

Fernando Garcia

Damion Grant

Joe Joyner

Thomas McDonald

Marco Moya

CELLOS

Stephen Feldman*

Danny Ebner+

Will Bell

Carlos Campanur

Emma Henry

Imeril Johnson

Carrick Patterson

Callie Shannon

Gracie Sketoe

Liberty Vasquez

Grace Whitton

BASSES

Russell Thompson*

Ian Collins+

Patrick McKerlie+

Lucas Alba

Nicolas Anderson

Brycen Self

HARP

Colleen Thorburn

FLUTES & PICCOLOS

Kami Curtis*

Alexandra Trawick*

Kassadee Raymond

OBOES

Cesar Blas*

Lorraine Duso

ENGLISH HORN

Cesar Blas

CLARINETS

Mariah Baechle*

Tyus Diaz*

Jacob Gatlin

E-FLAT CLARINET

Mariah Baechle

BASSOONS

Lora Butcher*

Emily Tollett*

HORNS

Brent Shires*

Genevieve Rucker

Nathaniel Smith

Jon Yopp

Dario Lisperguer

TRUMPETS

Trenton Rhodes*

Sami Oberhauser

Andrew Stadler

TROMBONES

Sergio Castillo*

Koby Elias

BASS TROMBONE

James Bargar

TUBA

Sam McHenry

TIMPANI & PERCUSSION

Mateo Peláez*

Simon Podsiadlik*

Will Anderson

Anna Mellick

Kiersten Sharpe

Steven Simmermon

* denotes principal

+ denotes associate principal

So that everyone may enjoy the music, please turn off all electronic devices.

We welcome music lovers of all ages, but if small children become a distraction,
please take them to the lobby.

The Conway Symphony Orchestra is supported in part by the Arkansas Arts Council,
the UCA Foundation and by in-kind support from the University of Central Arkansas,
and the UCA College of Arts, Humanities and Social Sciences.



Serving Arkansas?
THAT'S MUSIC TO OUR EARS.

PROUD SPONSORS OF THE CONWAY SYMPHONY ORCHESTRA

 **FirstSecurity**
Bank Better.

fsbank.com | onlyinark.com

Member
FDIC

PROGRAM NOTES

“Clair de lune”

From *Suite bergamasque*

Orch. André Caplet

Claude Debussy

1862-1918

Debussy composed the *Suite bergamasque* in 1890 while he was still fairly unknown and published it after extensive revisions only in 1905. By that time, after *L'après-midi d'un faune*, *Pelléas et Mélisande* and the String Quartet, he had become famous – or notorious. The Suite belongs to a tradition of French keyboard music dating back to the eighteenth century with the keyboard works of the Couperin family and especially Jean-Philippe Rameau. These are short pieces evoking a mood, an image or even the personality of a specific individual. Like so many of Debussy's subsequent works, they are deliberately referential, containing programmatic, visual or musical allusions that would have been readily familiar to his audience.

The third movement of the suite, *Clair de lune*, is Debussy's most used – and abused – composition. Because of its familiarity, it can evoke superficial salon music, unless played with great care. The movement was not born with this name; the original title was *Promenade sentimentale*, which Debussy changed just before publication.

Conductor and composer André Caplet (1878-1925) was Debussy's close friend and orchestrated many of his piano works.

Capriccio espagnol, Op. 34

Nikolay Rimsky-Korsakov

1844-1908

In the history of Russian nationalist music, Nikolay Rimsky-Korsakov occupies a place of honor. From 1871, when he joined the faculty of the St. Petersburg Conservatory, until his death, he taught and encouraged nearly every young Russian composer, from Glazunov and Arensky to Stravinsky and Prokofiev. After the death of Borodin and Mussorgsky, Rimsky-Korsakov edited, completed and “corrected” their manuscripts, especially their operas, and had them published.

Rimsky-Korsakov was particularly fond of “ethnic” pieces, creating compositions with a Russian, Central Asiatic, Italian or Spanish cast. In spite of the fact that his acquaintance with Spain was minimal – as a naval cadet in 1864-65, he spent three days in Cadiz – he felt sufficiently comfortable with its folk idiom to compose the symphonic suite *Capriccio espagnol*. He borrowed the themes and harmonies from a collection of authentic Spanish songs, transforming them with multi-textured orchestration. From its premiere in October 1887, it has been a particular favorite among orchestra players, who get hefty solo riffs.

The five movements begin with “*Alborada*” (a Spanish morning song), whose repeated theme serves as a kind of musical glue to give unity to the piece. There follows a set of five variations, which are more changes in mood than

PROGRAM NOTES

bravura showpieces. The “*Alborada*” then returns, but in a different key. The “Scene and Roma Song” features a series of faux-improvisatory orchestral solos that serve as a workup for the principal theme. The “*Fandango*,” a couple’s dance in triple time traditionally accompanied by guitar and castanets, completes the group, incorporating a presto reprise of the “*Alborada*” as the coda.

Clarinet Concerto No. 2 **First Section**

Oscar Navarro
b. 1981

Spanish composer and clarinetist Oscar Navarro received his musical education in Valencia, Spain, and then moved to the University of Southern California in Los Angeles to specialize in composition for film and TV. He concurrently continued to compose for the concert hall and symphonic band. He is currently on the faculty of the Spanish Film Academy.

Navarro wrote his Clarinet Concerto No. 2 in 2011-12 on commission from the Valencia Music Institute. Composed in one movement but three clearly identifiable sections, the work exploits the technical and emotional capabilities of the clarinet.

Navarro writes: “The first major section of the work will be divided into two parts, a very cantabile style tinged with ethnic/new age, unlike the second, completely contrasting style and different as is the typical flamenco music of Spanish folklore. This part will be accompanied by one of the instruments used in the world of flamenco, the palms.”

***Conga del Fuego Nuevo* (New Fire Conga)**

Arturo Márquez
b.1950

Born in a small town in the Sonoran Desert of northern Mexico, Arturo Márquez was the oldest of nine children of a professional mariachi-player. He studied piano, violin and trombone at the *Escuela Nacional de Música*, later adding composition. In California on a Fulbright Fellowship, he received an MFA in composition at the California Institute of the Arts. He currently teaches composition at the *Escuela Nacional de Música*.

Márquez’ *Danzón No. 2*, composed in 1994 on a commission from the National Autonomous University of Mexico, gained instant popularity and is sometimes referred to humorously as Mexico’s second national anthem.

Marquez composed the *Conga del Fuego Nuevo* in 2009. The conga originated in Cuba as a carnival dance and is the origin of the conga line dance popularized by the big bands in the USA before and after WWII, while the New Fire Ceremony was a pre-Columbian Mexican ritual. Marquez’ combining of the two has, therefore, no historical significance.

PROGRAM NOTES

From *Peer Gynt* Suite No. 1, Op. 46

Edvard Grieg
1843-1907

The most successful and best known of nineteenth-century Scandinavian composers, Edvard Grieg was one of the great exponents of romantic nationalism and a promoter of his native country's culture. He saw as his role in life to bring Scandinavian – especially Norwegian – musical and literary culture to the attention of the rest of Europe, especially Henrik Ibsen, Norway's most famous playwright.

In 1867 Ibsen published *Peer Gynt*, a play satirizing the weaknesses of human nature. It is the fantastic picaresque journey of a would-be hero who suffers the hard knocks of life in search of his own identity. Peer's quest entails contrasting episodes of selfishness and generosity, fantasy and reality, materialism and spirituality, steadfast loyalty and betrayal.

In 1874, Ibsen asked Grieg to write incidental music for a new production of the play. While Grieg attempted to express himself in the simple modes of his native Norwegian folk-music, his early training in German Romanticism comes through; the music owes much to Mendelssohn and Schumann. In some of the sections Grieg tried to express in music the forbidding, but beautiful Norwegian landscape, but most of the music reflects the ambiguity of the play.

From the 23 sections, Grieg extracted two orchestral suites, but the sequence of movements in the suites does not correspond to the dramatic order in the play. Rather, he created typical orchestral suites with movements alternating in mood and tempo.

Suite No.1 consists of:

Morning Mood: Originally the Prelude to Act IV. The woodwinds proclaim the dawn and the rustling sounds of the woods and streams. The mood darkens slightly in the middle section.

Death of Ase: Is a funereal chant for the death of Ase, Peer's beleaguered widowed mother.

Anitra's Dance: Anitra, the seductive daughter of an Arabian chief, tries to entice Peer to stay at the chief's court.

In the Hall of the Mountain King: Peer has a run-in with trolls – Norway's indigenous monsters who hide out under bridges and populate the nightmares of Norwegian children. The dance starts slowly, deep in the range of the solo bassoon, accompanied by pizzicato basses, gradually building up the tempo and dynamics as more instruments are added – a Norwegian Bolero. A coda with the unusual effect of staccato cymbal crashes concludes the Suite.



*Inspired to support
the CSO and keep
the arts alive
in Conway.*

www.snaponequipment.com

PROGRAM NOTES

Finlandia, Op. 26

Jean Sibelius
1865-1957

Sweden relinquished Finland to the Russian Empire in 1809, where it became an autonomous duchy with significant control over its own affairs. Beginning in 1870, however, Russia gradually began to rescind Finland's privileges and autonomy. While Swedish was the language of the educated and of the middle class, Russian repression aroused strong nationalist feelings and initiated a revival of the Finnish language. Born into this new nationalism, Jean Sibelius enrolled in the first grammar school to teach in Finnish. Finland finally gained its independence towards the end of World War I.

In February 1899, the Russian Imperial Governor published the notorious "February Manifesto," designed to curtail Finland's autonomy and facilitate its Russification. Among other restrictions, it imposed censorship of the press, forcing the demise of many newspapers. In order to support the dismissed staff, a three-day cultural festival was organized in Helsinki to raise funds for the Press Pension Fund. Sibelius provided the music for the grand finale in the form of a dramatic seven-tableaux spectacle depicting episodes from Finnish history. It culminated in a stirring patriotic anthem entitled Finland Awake. A year later, with some modification, Sibelius recast it as an independent tone poem, Finlandia. With its powerful opening, symbolizing Russia's brutal repression of the Finns, and hymn-like middle section, it soon became the symbol of Finnish nationalism. Before 1917, in order to evade the Russian censor, it had to be performed under the euphemistic title "Impromptu."

Program notes by:

Joseph & Elizabeth Kahn

Wordpros@mindspring.com

www.wordprosmusic.com

SPECIAL THANKS

Dr. Houston Davis-University of Central Arkansas

Dr. Stephen Plate-Chair, Music Department UCA

Dean Tom Williams, UCA College of Arts, Humanities and Social Sciences

Rock Pond Pros/The Max Event Venue

Brent Fatherly, clarinet

Chris Fritzges, actor

Scott Meador, Professor of art and design

Student Animation Artists: Isaiah Merriwether, Nic Miles, Jaxton Johnson,

Yudai Sakurai, Len Adair, Bruce White, Avery Moore

Aramark-Hospitality Sponsor

Point Remove Brewing Company-Hospitality sponsor

SEASON ADD ON



IN CONCERT



WITH THE CONWAY SYMPHONY ORCHESTRA

PRESENTED BY UCA PUBLIC APPEARANCES



FEBRUARY 3, 7:30 PM

REYNOLDS PERFORMANCE HALL, UCA

Experience the caped crusader like never before as the CSO performs the blockbuster movie's captivating score LIVE alongside the film for an unforgettable concert experience. Don't miss "Batman" (1989, starring Micheal Keaton.)

**Tickets available at the box office, (501) 450-3265, M-F 10-4,
or conwaysymphony.org**

Here to provide synchronized
financial planning and wealth management!



Northwestern Mutual | GARCIA WEALTH MANAGEMENT

*Pleased to support
the
Conway Symphony
Orchestra!*

**Halter's
BODY SHOP**

*Pleased to
support
the Conway
Symphony*

BOARD OF DIRECTORS

THE CONWAY SYMPHONY ORCHESTRA BOARD OF DIRECTORS 2023-24

Judy Harkrider
President

Emily Walter
Vice-President

Dr. John Parrack
Treasurer

Kathy Linder
Recording Secretary

Pete Tanguay
Past-President

Ruthann Curry Browne
Jack Frost
Osmar Garcia
Phillip Gullic, MD
Sarah Henry
Amanda Horton
Melissa Jenkins
Evelyn Landrith
Kathy Linder
Kirk Netherton
Laurie Netherton
Brooklyn Parker
Dr. Patty Phelps
Liz Taylor-McMullen
Jim Skelton

Israel Getzov
**Music Director/
Conductor**

Suzanne Loerch,
General Manager

Dr. Stephen Plate,
Chair,
Music Department

Christine Donahue-Mayo,
Guild President

Alicia Edmiaston,
Guild Vice-President

BOARD EMERITI

Jerry Adams
Bill Adkisson
Ralph Behrens *
Carolyn Brown
Sam Driggers *
Carl Forsberg *
Bill Hegeman
Nancy Jackson
Armilda McCormack
Joyce Miller
Scott Moore *
Carrick Patterson
Lyle Rupert
Louis Stell
Phil Stone
Allison Vetter

**Deceased*

SPECIAL THANKS TO ENCORE SUPPORTERS



The CSO is grateful to these dedicated supporters who provided funding for the CSO's Encore season kickoff event.

Pictured with CSO Music Director, Israel Getzov are Courtney Corwin, Sandra and Bill DeVore, Suzanne and Stephen Feldman, Beverly Freiley, Judy and Robbie Harkrider, Melissa and Paul Jenkins, Christine Donahue and George Mayo, Laurie and Kirk Netherton, Pat Qualls, Marge Betley and Greg Weber

THANK YOU TO OUR DONORS

Conway Symphony Orchestra appreciates the support of the following individuals and corporations. All gifts received during the season are gratefully acknowledged in concert programs for a full year after the donation date. The following list reflects gifts and pledges received from October 15, 2022 through October 15, 2023.

SEASON UNDERWRITERS

University of Central Arkansas
UCA College of Arts, Humanities and
Social Sciences
Conway Symphony Orchestra Guild

PROGAM UNDERWRITERS

Arkansas Arts Council
Arkansas Community Foundation,
Faulkner County
Behrens Fund
Conway A&P Commission
Conway Convention and Visitors Bureau
Reynolds Performance Hall-UCA
presents
Toad Suck Daze

PATRONS (\$1000+)

Acxiom
Mr. and Mrs. Jerry Adamst
Mr. and Mrs. William Adkisson
Arkansas Arts Council
Arkansas Community Foundation
Arvest Bank
Ashley's Finds
Dr. Carolyn Brown-
Principal Flute Sponsor
Mr. and Mrs. Aaron Cates-
Conductor Chair Sponsor
Centennial Bank
College Square
Conway A&P Commission
Conway Corp
Courtney Corwin, Charlotte John
Realty
Countryside Motors
Crain Automotive†
Detco Industries
Edward Jones
Emily Walter, Realtor
First Security Bank
Mr. and Mrs. Jack Frost-
Oboe Section Sponsor
Garcia Wealth Management, North-
western Mutual†
Dr. Phillip Gullic
Halter's Body Shop
Homewell Care Services
Level 7 Chemical

Nabholz Construction Corp.
Netherton Promotions
Ozark Mountain Construction
Palmer Music
Dr. and Dr. John Parrack†
Mr. Paul Patton
Mr. William Robertst†
Rock Pond Pros
Ryan Webb-Shelter Insurance
Sales Force Marketing
SnapOn Equipment
Tress Construction
UCA Foundation
Welcome Home Properties

BENEFACTORS (\$500-\$999)

Mr. Carl Anthony†
Dr. Linda Beene
Mr. and Mrs. Stephen Cohen-
Trumpet Section Sponsor
Mr. and Mrs. Gene Corcoran
Creative Institute of Central Arkansas
Mr. and Mrs. Granger Davis-
Concertmaster Chair Sponsor
Dr. and Mrs. Houston David
Mr. and Mrs. Charles DeBoard
Mr. and Mrs. Charles DeVoret††
Dr. and Dr. Paul Dickinson
Dr. and Mrs. Stephen Feldman††
Drs. Joyce and Terry Fiddler
Mrs. Beverly Freiley††
Mrs. Margaret Grimes
Mr. and Mrs. Robbie Harkrider††
Mr. and Mrs. Paul Jenkins††
Mr. George and Mrs. Christine
Donahue-Mayo††
Mrs. Joyce Miller
Mr. and Mrs. Kirk Netherton††
Mrs. Patsy Newton†
Mr. and Dr. Henry Phelps†
Dr. and Mrs. Lyle Rupert†
Ms. Rebecca Sartini
St. Francis Veterinary Clinic
Violin Section Sponsor
The Kitchen Store & More
Marge Betley and Greg Webert††
Mr. and Mrs. Leo Wilcox

SUSTAINERS (\$250-\$499)

Johnny Adams †
Anonymous
Mr. and Mrs. Jack Bell†
Mr. and Mrs. William Burley
Ms. Courtney Corwin††
Mrs. Claudia Davist
Mr. and Mrs. Granger Davis-
Concertmaster Chair Sponsor
Mr. Israel Getzov and
Ms. Akiko Fujimoto
Col. and Mrs. Wayne Johnston
Dr. John Krebs and Dr. Liz Gron
Dr. Mary Lackiet†
Dr. and Mrs. David Larson-
French Horn Section Sponsor
Mr. and Mrs. Danny Linn†
Mrs. Sylvia Murchison-
Woodwind Section Sponsor
Mr. and Mrs. Charles Nabholz†
Mr. and Mrs. Carrick Patterson†
Mrs. Pat Quallst††
Julia and Mallory Taylor
Mr. and Mrs. Pete Tanguay
Roe Henderson-Shelter Insurance
Mr. Jim Skelton
Mr. and Dr. Steven Stonet
Mrs. Pamela WoodardGeorge
Yours Truly Consignment Shop

SUPPORTERS (\$100-\$249)

Mr. and Mrs. David Adcock
Mr. Donald Arnold
Mr. and Mrs. Jerry Biebesheimer
Mr. and Mrs. Richard Clark
Conway Crafted-Rogue Roundabout
Mr. and Mrs. Mark Cooper
Mrs. Margaret Davis
Ms. Jeannie Denniston
and Mr. Len Schlientz
Mr. and Mrs. Bill Groth
Dr. and Mrs. Bruce Haggard
Ms. Hollis Haley
Dr. Linda Hsu
Mr. Brad Lacy
Mr. and Mrs. Elizabeth Peatross
In memory of Gay Moore

Sustainers, Continued

Mr. and Mrs. David Peters
Mr. John Howard Reed
and Anselin Trace
Mr. William Rogers
Mr. and Mrs. William Siegel
Mr. and Mrs. John Stiritz
Mr. and Mrs. Paul Taber
Mrs. Sharon Thompson
Triple C Sales & Service

CONTRIBUTORS (UP TO \$99)

Mr. and Mrs. Pierre Antoine
Mrs. Linda Beene
Ms. Jamie Bird
Mr. and Mrs. Kevin Curry Browne
Ms. Melissa Browning
Mr. and Mrs. Tim Colclasure
Conway Civic League-
In memory of Sandra Hudson
Mr. Russell Crumbley
Ms. Alicia Edmiaston
Ms. Terri Evans
Ms. Betsy Gillaspay-Williams
Mr. Adam Harrell
Mr. and Mrs. Randy Horton
Ms. Zada Koen

Mr. Joshua Maloney
Ms. Donna Overton
Mr. and Mrs. Zachary Parker
Dr. and Mrs. Stephen Plate
Ms. Rachel Tidwell
Mr. and Mrs. Michael Woodrum
†ARCF endowment contributor
†† Host Encore Season Kick-off

INKIND DONORS

Inkind Donors
Action Jack's Ultra Sports
AR PBS
Blue Barn Bakery
Blue Sail Coffee
Branch Out
Buff City Soap
Conway Bowl
Conway Institute of Music
Dear's Décor
Francis M. Fine Jewelry
Golden and Co.
Mr. Steve Griffith and Mrs. Vivian Noe
Independent Music Service
Jason Owens Law Firm
Jennifer's Antiques

Kick's Active Wear
Las Delicias
Lee Ann's Fine Jewelry
Life Wave Wellness
Linda Marie's
Little Rock Violin Shop
Liz's Health Market
Martinous Oriental Rug Co.
The Max Event Venue
Neighborhood Pet Shoppe
Netherton Promotions
Ol' Barts Southern Eats
Park Hill Home
Petit Jean Liquor
Petit Jean Meats
Point Remove Brewery
Mr. John Pickett
Plant Outlet
Shorty's Bar-B-Que
Sissy's Log Cabin
Squizito
Stitcher's Garden
Toad Suck Buck's
UCA Foundation
UCA Public Appearances

We make every effort to ensure the accuracy of our list of supporters. If you believe an error has been made, please contact Suzanne Loerch at (501) 269-1066 or symphony@conwaycorp.net.

CSO GUILD

Guild President,

Christine Donahue Mayo

Vice-President, Alicia Edmiaston

Secretary, Jeannie Denniston

Treasurer, Donna Overton

CSO Board Liason,

Laurie Netherton

MEMBERS

Jan Adcock
Julie Adkisson
Kim Antoine
Larry Averill
Pat Baker
Linda Ball
Brenda Bearden
Linda Briggler
Ruthann Curry Browne
Martha Bumpers
Gloria A. Cheshier
Barbara Clancy

Betty Cohen
Karen Colclasure
Linda Cooper
Courtney Corwin
Vicki Crockett
Sherry Currran
Jackie Daugherty
Jeannie Denniston
Maureen Depsky
Patsy Desaulniers
Tom Desaulniers
Sandra Devore
Alicia Edmiaston
Beverley Freiley
Akiko Fujimoto
Betsy Gillaspay-Williams
Caroline "Carrie" Grantham
Craig Grantham
Philip Gullic
Zada Koen
Suzanne Loerch
Christine Donahue-Mayo

Liz Taylor-McMullin
Joyce Miller
Sarah Morse
Mary Mosley
Laurie Netherton
Donna Overton
Patty Phelps
Teresa Plate
Pat Qualls
Marilyn Rishkofski
Jackie Robinette
Sally Roden
Beth Ruple
Len Schlientz
Sharon Thompson
Suzann Waggoner
Cindy Webb
Dee Woodrum
Michael Woodrum
Mary Worthen



CONWAY
SYMPHONY
ORCHESTRA
Israel Getzov, Music Director
CONWAYSYPHONY.ORG

Holiday SPECTACULAR



ConwayCorp

DECEMBER 2, 7:30 PM REYNOLDS PERFORMANCE HALL

Ring in the holidays with the CSO!
Nia Renée sings contemporary holiday classics and
guest artists Arkansas Festival Ballet perform selections from "The Nutcracker."

Information and tickets at conwaysymphony.org or call the box office at
(501) 450-3265 for \$15 children's tickets with adult purchase, \$30/\$40/\$50.

Come to recharge. Discover retail therapy.



Located in the heart of The Natural State, Conway is the perfect place for an outdoor adventure.

No matter what brings you to Conway, Arkansas, you're bound to discover something else that makes you want to stay. With three colleges, the city of 66,000 is not your ordinary small town. Conway is a growing city - rooted in education - with a thriving downtown, a flourishing arts scene, and awe-inspiring natural beauty. Its visible sense of community will make you feel right at home. Its hidden gems will leave you wanting to explore.

Conway.
Full of possibilities.



ConwayArk.com

866.7CONWAY



CONWAY
Convention & Visitors Bureau
GETSMART



PROUDLY SUPPORTING THE CONWAY SYMPHONY ORCHESTRA

**We hope you
enjoy the show!**

CONWAY

Stacey Alston
Financial Advisor
1309 Main Street
501-504-2280

Jason H Braswell
Financial Advisor
355 Hogan Lane Suite B
501-327-6158

Matthew F Carpenter
Financial Advisor
815 Hogan Ln Suite 7
501-328-3188

Granger F Davis, AAMS™
Financial Advisor
1124 Oak Street
Toad Suck Square
501-327-5406

Jakob C Henry, CRPC™
Financial Advisor
1124 Oak Street
Toad Suck Square
501-327-5406

Trey Howell
Financial Advisor
355 Hogan Lane Suite B
501-327-6158

Lisa A Lovell
Financial Advisor
2605 Prince Street
501-327-6433

Chris E Masters, AAMS™
Financial Advisor
1875 Mckennon St Ste 400
501-329-3577

Samuel G Nagher III
Financial Advisor
2100 Meadowlake Rd Ste 1
501-327-8422

Jimmy Tipton
Financial Advisor
1050 Bob Courtway Dr Ste 109
501-327-3694

GREENBRIER

Josh Crawford, CFP®
Financial Advisor
6 Lois Lane
501-679-6332

www.edwardjones.com Member SIPC

Edward Jones



**Supporting
the CSO
with pride!**



501-230-5728
BellaRustina.com

  
Ashley@Ashleysfinds.com

November 10-12, 2023

Friday EARLY BUYING DAY! 9AM - 5PM | Saturday 9AM - 5PM | Sunday 11AM - 4PM
\$10 Admission | \$5 Admission

Admission is Good All Weekend! Parking is Free!
300+ booths of vintage, handmade, and boutiques inside the
Conway Expo & Event Center

Plus Open-Air Pavilion

2505 E. Oak St. Conway, Arkansas



Looking for Trusted In-Home Care?

HomeWell offers the peace of mind you need and a personalized care plan based on individual needs.

Call
501-358-6175


HomeWell
CARE SERVICES



Welcome Home Properties & Associates

501-328-2073

GEORGE H. HEINTZEN, III
Broker/Owner

**A FULL SERVICE
PROPERTY MANAGEMENT
COMPANY**

PROUD TO SUPPORT THE CSO!

2850 Prince St., Ste. 35
Conway, AR 72034
welcomehomeproperty.org

Arkansas Democrat  Gazette

Music
IS
LIFE.

that's why hearts have beats.

50th LIFE

hitting all the high notes of central arkansas for 15 years

Subscribe today at 50lifemag.com

UA
LITTLE
ROCK
PUBLIC RADIO

FM 89.1
KUAR

Classical 90.5
KLRE

Pleased to be a Sponsor
for the
Conway Symphony
Orchestra!

LEVEL 7
CHEMICAL & SUPPLY

**Proud to
support the
Conway
Symphony
Orchestra!**

TressCo
CONSTRUCTION

**Proud to
support
Music that
Connects**

**COUNTRYSIDE
MOTORS**

CountrysideMotors.com

*Proud
to support the
CSO
and the arts*



Together, we are

#FirstServiceStrong



FIRST SERVICE BANK
FirstServiceBank.com



JOIN THE CSO GUILD



Annual dues are only \$30.

Contact

Christine Donahue,
cdonahue@uca.edu
for more information.

The CSO Guild's activities support, promote and encourage a love of music in our community through our very own Conway Symphony. Fundraising events like Jazz it Up and children's educational presentations like The Little Red Hen are just some of the ways this group of dedicated volunteers makes it happen.

THE DRAWDOWN HOEDOWN NOVEMBER 2

Mark your calendars for something NEW this Fall! Join us November 2 at the Brick Room in downtown Conway.



CONWAY PRINTING COMPANY

645 Exchange Ave. • Conway, AR 72032

501.329.2924 • josh@conwayprinting.com • conwayprinting.com



CSO IN THE CLASSROOM

This program provides free, educational presentations to students in Conway area schools and homeschool programs! More than 23,000 students have been inspired by this interactive and fun classroom program.

SUPPORTED BY



CSO ON THE GO

CSO ensembles perform at public events and senior living facilities, and bring Instrument Petting Zoos and Educational Concerts to locations throughout the Conway area.

SUPPORTED BY

RALPH BEHRENS
FUND

ARKANSAS
community foundation
FAULKNER COUNTY
Smart Giving to Improve Communities





Arkansas Arts Council

Support for the Conway Symphony Orchestra is provided, in part, by the Arkansas Arts Council, an agency of the Arkansas Department of Parks, Heritage, and Tourism, and the National Endowment for the Arts.



The CSO is proud to have support from the Arkansas Community Foundation of Faulkner County.

HOSPITALITY SPONSORS



aramark



UCA Catering is your first and last stop for the perfect catered event!

Let us cater to you!

Contact Us: 501-450-5982

Enjoy our other retail options available to YOU on the UCA campus:



**PLEASED TO SUPPORT THE
CONWAY SYMPHONY
ORCHESTRA!**

CrossCreekSandwichShop.com



**PROUD SUPPORTERS
OF THE
CONWAY SYMPHONY
ORCHESTRA!!**

THANK YOU TO OUR SPONSORS

UNDERWRITERS



UNIVERSITY OF
CENTRAL
ARKANSAS™

COLLEGE OF ARTS,
HUMANITIES, AND
SOCIAL SCIENCES



2023-2024
Season

Performance Hall
UNIVERSITY OF CENTRAL ARKANSAS



UNIVERSITY OF
CENTRAL
ARKANSAS™



SPONSORS



ROCK
POND
PROS



THE MAX
EVENT VENUE



SUPPORTING ORGANIZATIONS



Arkansas Democrat Gazette





UCA

COMMITMENT

A DEBT-FREE

DEGREE PATHWAY.



Learn more at

UCA.EDU

